

Preliminary reports

J. Perinat. Med.
8 (1980) 38

Fetal heart rate acceleration in response to light stimulation as a clinical measure of fetal well-being. A preliminary report

Dan Peleg, Jack A. Goldman

From the Department of Obstetrics and Gynecology, Hasharon Hospital, Petah Tikva, and the Sackler School of Medicine, Tel Aviv University, Tel Aviv, Israel.

One of the main problems associated with the management of high-risk pregnancies is the lack of a simple, non-invasive, inexpensive and reliable test for the assessment of fetal condition. For that purpose various tests have been suggested, which are intended to warn the obstetrician of impending fetal demise. While some authors have emphasized the importance of fetal movements in the monitoring of high-risk pregnancy [5], others associated the reaction of fetal heart rate to its movements [2,4].

The purpose of this study is the evaluation of fetal condition in high-risk pregnancies, in which daily fetal movement count is reduced. In those cases we have evaluated the reactivity of the fetal heart rate to a light stimulus.

1 Material and methods

This study consists of 10 high-risk pregnancies with intact membranes, in the 38th to 43rd week of gestation, with fetuses in vertex presentation, in whom the daily fetal movement count was reported to be diminished (as counted by the mothers). An attempt was made to assess the fetal condition in all women, first with the aid of an F.A.D., which failed since difficulties in interpretation of the trace were encountered due to the paucity or absence of fetal movements.

This group included 7 postterm pregnancies and 3 patients with pre-eclamptic toxemia. The fetal

heart rate was monitored in these patients by means of external monitoring, with the patient lying flat on her back, in lithotomy position. The tococardiograph used was an H.P. 3028A with ultrasonic stethoscope. The tonus of the uterus was registered in parallel. Following initiation of registration, an amnioscopy was performed in the usual way, while all actions, such as vaginal disinfection, introduction of the amnioscope, etc., were noted on the trace. The amniotic membranes were visualized, so that the amnion and fetus were exposed to cold light for a period of 30 seconds alternatively, while the fetal heart rate and uterine tonus were registered coincidentally, and the fetal movements were noted in parallel, as accounted by the parturient. O.C.T.'s were done in all women following the light test. APGAR scores were registered as well in all newborns.

2 Results

In 8 out of 10 cases examined patterns of acceleration of the fetal heart rate reactive to light were obtained. In these fetuses the O.C.T. was negative. APGAR scores of the newborns at 1 and 5 minutes ranged between 8–10. In the 2 other pregnancies non-reactive patterns were registered; in one the O.C.T. was positive; the baby born by Caesarean section showed signs of marked distress, with an APGAR score of 4 following 1 minute and 7 after 5

0300-5577/80/0008-0038\$02.00

© by Walter de Gruyter & Co. · Berlin · New York

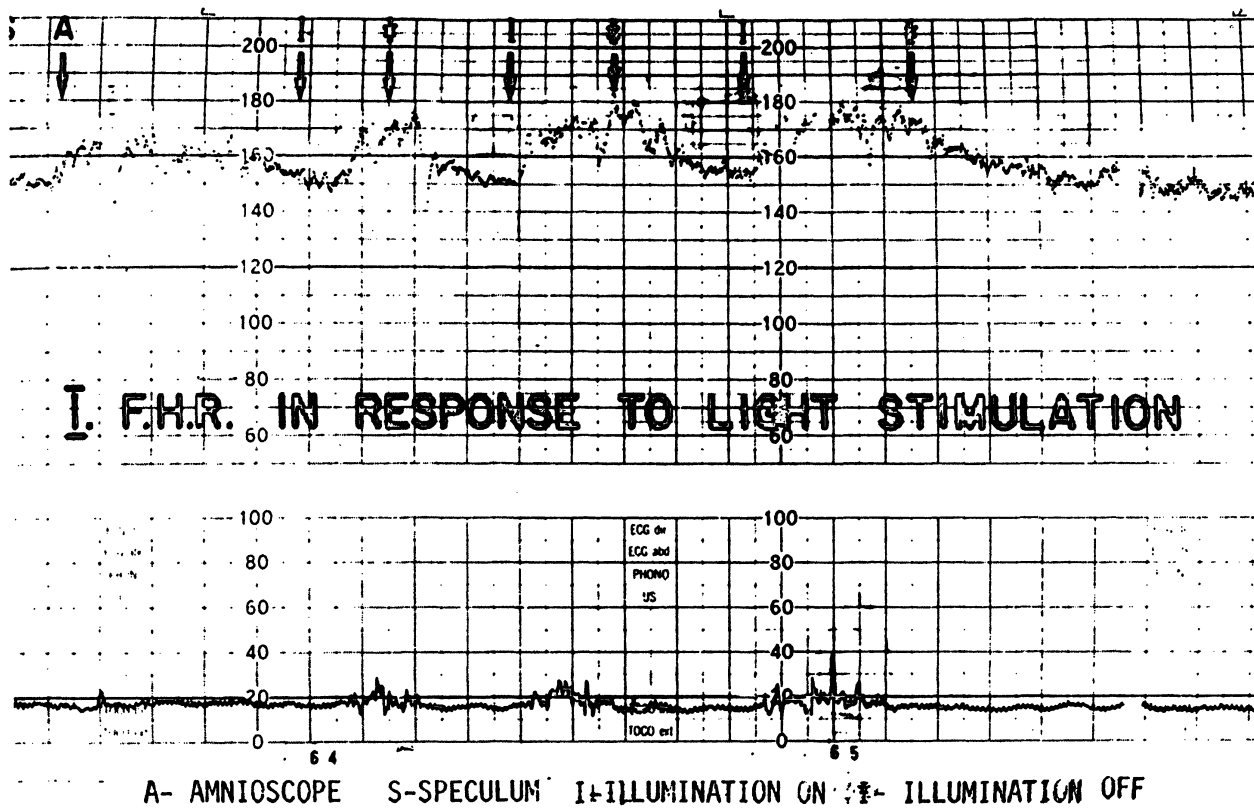


Fig. 1. Reactive pattern to light stimulation.

minutes. In the other case with non-reactive pattern the O.C.T. was negative, and the baby was born in good condition, with APGAR 8 and 10 at 1 and 5 minutes respectively. No meconium was found in the amniotic fluid during amnioscopy in any case.

3 Comment

A reliable test permitting the evaluation of fetal condition in the antenatal period may significantly reduce the perinatal morbidity and mortality. Significant progress in this field has been achieved by the introduction of the non-stress monitoring of the fetus (F.A.D.) [2,4]. This test indeed answers the required conditions; nevertheless, its dependence on the presence of fetal movements precludes its application in many high-risk pregnancies, in which fetal movements are markedly diminished or absent. In fact, the F.A.D. cannot be used in those cases in which one attempts to assess the condition of the fetus in a quiescent period or when it is

“asleep”. Thus, during monitoring of the hypoactive fetus, it is possible to overcome the problem of absence of movements by provocation of the fetus to move. Other means of such provocation include pressure on the patient’s abdomen [6], vibrations [1], as well as sound stimulation [3].

The mechanism of action of the light test seems to be a stimulation of the fetus to move by means of illumination and subsequent reactive acceleration of its heart rate to movements. This hypothesis seems to be confirmed by a lag time between illumination and fetal heart acceleration. In that short period fetal movements are well demonstrated. Acceleration following illumination periods of the amniotic cavity does not appear to be a result of pressure or direct photo-stimulation of reflectory fetal centers for fetal heart acceleration.

In conclusion, this simple test may be done in a relatively large population of women, especially in pregnant women with an inactive or hypoactive

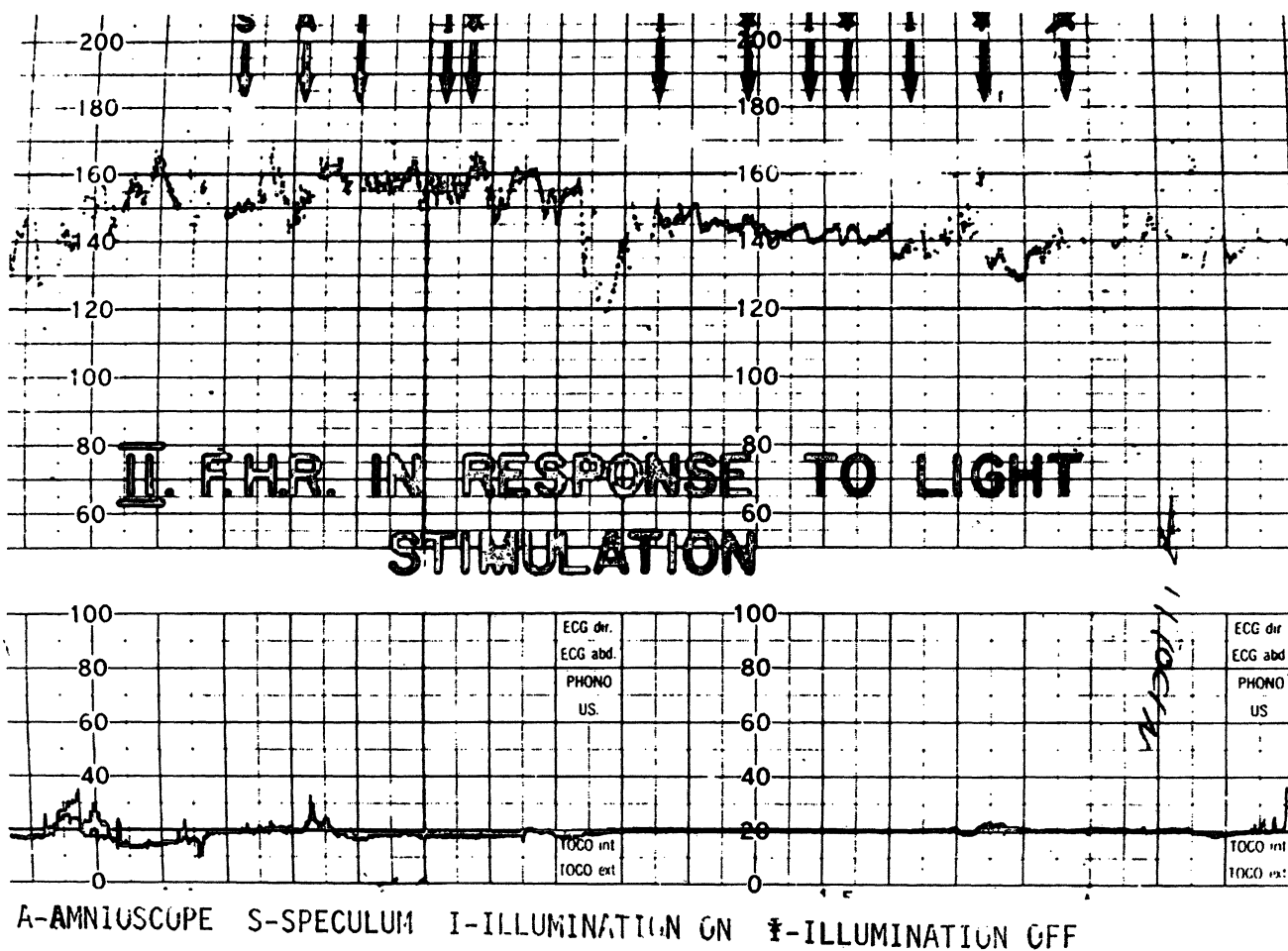


Fig. 2. Nonreactive pattern to light stimulation.

fetus. Further evaluation of the light test in a large number of pregnancies is in order, including those with presenting part other than vertex, with differ-

ent types of meconium-stained amniotic fluid and various stages of gestation, as well as a wide spectrum of pathological pregnancies.

Summary

Numerous tests have been proposed for the assessment of fetal condition during the antenatal period. This preliminary report suggests the possibility of exposing the fetus-in-utero to alternating light during amnioscopy, with simultaneous registration of the fetal heart rate. This simple, non-invasive, inexpensive test, which may be

evaluated instantaneously, shows a good correlation to the condition of the fetus and newborn, as expressed by the O.C.T. and the APGAR score respectively. The advantage of this test is that it is independent of the existence of fetal movements, as well as of the arousal state of the fetus.

Keywords: Light stimulation, nonstress test, O.C.T., reactive/non reactive pattern.

Zusammenfassung

Akzelerationen der fetalen Herzfrequenz nach Lichtreizen als Parameter für die fetale Zustandsdiagnostik – vorläufige Ergebnisse.

Für die antenatale Zustandsdiagnostik stehen zahlreiche Tests zur Verfügung. An dieser Stelle wollen wir auf die Möglichkeit hinweisen, den Feten während der Amnioskopie alternierenden Lichtreizen auszusetzen, wobei simultan die Herzfrequenz registriert werden soll. Es handelt sich um eine einfache, nicht-invasive und wenig

aufwendige Methode, deren Ergebnisse unmittelbar vorliegen und ausgewertet werden können. Darüberhinaus besteht eine gute Korrelation mit der Beurteilung des fetalen bzw. neonatalen Zustandes nach anderen Methoden, wie z.B. *Oxytocinbelastungstest und APGAR-Index. Der Vorteil des beschriebenen Tests besteht darin, daß er unabhängig von fetalen Bewegungen und unabhängig vom Aktivitätszustand des Feten ist.

Schlüsselwörter: Lichtreize, belastungsfreier Test, Oxytocinbelastungstest, Reaktionsmuster.

Résumé

L'augmentation de la fréquence cardiaque foetale en réponse à la stimulation lumineuse en tant que critère clinique du bien-être foetal' Rapport préliminaire'

De nombreux test ont été proposés pour apprécier l'état du foetus durant la période anténatale. Ce rapport préliminaire évoque la possibilité d'exposer le foetus in utéro, par amnioscopie, à de la lumière alternative avec enregistrement simultané de la fréquence cardiaque

foetale' Ce test simple, non-invasif et non-expensif que l'on peut apprécier de façon instantanée, montre une bonne corrélation avec l'état du foetus et du nouveau-né, comme le confirment respectivement le test à l'ocytocine et le coefficient d'Appgar. L'avantage de ce test réside en son indépendance des mouvements foetaux, aussi bien que du l'état d'éveil du foetus.

Mots-clés: Modèle réactif/non-réactif, non-stress test, P.O., stimulation lumineuse.

Bibliography

- [1] GRIMWADE, J., D. WALKER, C. WOOD: Response of the human fetus to sensory stimulation. Aust. N.Z. J. Obstet. & Gynec. 10 (1970) 222
- [2] LEE, C. Y., P. C. DILORETO, B. LOGRAND: Fetal activity acceleration determination for the evaluation of fetal reserve. Obstet. & Gynec. 48 (1976) 19.
- [3] READ, J. A., F. C. MILLER: Fetal heart rate acceleration in response to acoustic stimulation as a measure of fetal well-being. Amer. J. Obstet. Gynec. 129 (1977) 512
- [4] ROCHARD, F., B. S. SCHIFRIN, F. GOUPIL: Non stressed fetal heart rate monitoring in the antepartum period. Amer. J. Obstet. Gynec. 126 (1976) 699
- [5] SADOVSKY, E., H. YAFFE, W. Z. POLISHUK: Fetal movement monitoring in normal and pathological pregnancy. Int. J. Gynecol. Obstet. 12 (1974) 75
- [6] WALKER, D., J. GRIMWADE, C. WOOD: The effects of pressure on fetal heart rate. Obstet. & Gynec. 41 (1973) 351

Received December 18, 1978. Revised May 18, 1979.
Accepted June 18, 1979.

Dr. Jack A. Goldman
Hasharon Hospital
Petah Tikva, Israel

J. Perinat. Med.
8 (1980) 42

The genetic component of quantitative perinatal variables. An analysis of relations between erythrocyte acid phosphatase phenotype and birth weight, gestational age and serum bilirubin level in the first days of life

**E. Carapella*, R. Pascone*, M. G. Gori*, P. Matteucci*, F. Gloria-Bottini*, J. Mor-
tera**, P. Lucarelli***, R. Scacchi***, E. Bottini******

* Dept. of Child Health, University of Rome

** Lincei Interdisciplinary Center, "Accademia Nazionale dei Lincei", Rome

*** Center for Evolutionary Genetics, Italian National Research Council, Rome

**** Dept. of Pediatrics, University of Rome and Dept. of Genetics, University of
Camerino, Italy.

1 Introduction

Both genetic and environmental factors influence intrauterine development. However, since the hygienic and nutritional conditions in human populations are continually improving, increasing importance is being given to the genetic factors affecting development and fetoneonatal morbidity. The studies on the identification of specific genetic factors influencing intrauterine development have till now mainly concerned monofactorial diseases, chromosomal aberrations and fetomaternal incompatibility. These conditions are generally scarcely dependent on environmental factors and the relevant biological characteristic shows a bimodal distribution with a distinct separation between "normal" and "pathological".

In many pathological situations a polygenic inheritance is presumed. In these conditions environmental factors are of great importance. The relevant biological characteristic is presumed to be normally distributed with a threshold value beyond which there is a definite risk of disease. The identification of specific genetic factors which influence multifactorial diseases is of both theoretical and practical importance, especially in disease prevention. Research in this area should be directed towards the identification of

those factors which determine "normal variability". Genetic polymorphisms are therefore the most important candidates for this type of analysis [1, 7].

For several years our research group has studied erythrocyte acid phosphatase polymorphism (ACP₁), especially in relation to hemolytic conditions.

Erythrocyte acid phosphatase is a SH dependent enzyme which shows an electrophoretic polymorphism determined in Caucasian populations, by the occurrence of three common alleles (P^a, P^b and P^c) at an autosomal locus. Correspondingly six electrophoretic phenotypes are observed: A, B, C, BA, CA and CB. The six phenotypes show decreasing enzymatic activity in the following order C > CB > CA ≥ B > BA > A. C phenotype is very rare [8,9,10].

In order to determine the selective forces acting on this system and to investigate its physiological and pathological role, we considered of great importance the fact that erythrocyte acid phosphatase is an SH dependent enzyme particularly susceptible to oxidized glutathione (GSSG) [4,5, 11]. From this point of view, those situations in which damage to the SH dependent structures presumably play a central pathogenetic role (oxydative hemolysis) are of particular interest.

0300-5577/80/0008-0042\$02.00

© by Walter de Gruyter & Co. · Berlin · New York

Hemolytic anemia associated with glucose-6-phosphate dehydrogenase deficiency is an example of this type of condition. A transient condition, common to all human populations, is the erythrocyte's greater vulnerability to oxidative damage observed during the neonatal period. It is well known that the critical factor in the development of "physiological" jaundice is the inability of the newborn liver to adapt itself to the extrauterine environment and to readily handle the total bilirubin load. Nevertheless attention should also be focused on mechanisms responsible for the increased hemoglobin catabolism since the impairment of hepatic clearance of the newborn may exaggerate the effects of even small increases of bilirubin production.

In this paper the relation between ACP₁ polymorphism and some quantitative neonatal variables, which are probably multifactorial, was investigated. The neonatal variables considered were birth weight, gestational age and bilirubin levels in the first few days of life. A partial preliminary report concerning some data on serum bilirubin levels has been already published as a letter to the Editor [6].

2 Material and methods

Two consecutive series of newborn babies were studied in the Neonatal Section of the Dept. of Child Health of Rome University. In the first

series of 229 infants total serum bilirubin levels from birth (cord sample) to the fifth day of life, every 24 hours, were determined by means of OHC-photoictometer. ACP₁ phenotype was determined at birth by starch gel electrophoresis [8,9]. Sex, birth weight, gestational age, ABO and Rh fetomaternal compatibility were recorded. In the second series of 189 infants only ACP₁ phenotype was determined. Sex, birth weight and gestational age were also recorded.

3 Results

In Tab. I the distributions of birth weight, gestational age, ABO and Rh fetomaternal compatibility and ACP₁ phenotypes in the first series of infants are reported. Treated (by phototherapy or by exchange-transfusion) and untreated subjects are also tabulated. The proportions of the four classes of compatibility are very close to those expected on the basis of ABO and Rh gene frequencies.

Tab. II shows the mean values and standard deviations of mean and maximum bilirubin level (calculated during the first 5 days of life) and of its increment in the first 24 hours of life for the five acid phosphatase phenotypes. F values and corresponding probability values for analysis of variance are also reported. The highest mean values of the three bilirubin parameters are observed in subjects showing CA phenotype. The values of F statistic for analysis of variance show

Tab. I. Sample distribution of some relevant variables in the first series of 229 infants. Treated (by phototherapy or by exchange-transfusion) and untreated subjects are tabulated separately.

		Total	Treated	Untreated
Birth weight (gr)	≤ 2500	14	5	9
	> 2500	215	19	196
Gestational age (days)	< 259	17	5	12
	259 ÷ 293	199	17	182
	≥ 294	13	2	11
ABO and Rh foeto-maternal compatibility	ABO and Rh compatible	163	17	146
	Rh incompat.	21	4	17
	ABO incompat.	39	3	36
	ABO and Rh incompatible	6	0	6
ACP ₁ phenotype	A	19	2	17
	B	112	12	100
	BA	78	7	71
	CB	13	1	12
	CA	7	2	5

Tab. II. Mean values and standard deviations of mean and maximum serum bilirubin levels during the first five days of life and of increment of serum bilirubin level during the first 24 hours of life calculated for the five acid phosphatase phenotypes in the first series of 229 infants.

	mean bilirubin	maximum bilirubin	bilirubin increase in the first 24 hours
A	5.2 ± 1.3	7.6 ± 2.4	3.2 ± 1.3
B	5.1 ± 1.7	7.7 ± 3.1	3.2 ± 1.2
BA	5.1 ± 1.6	8.0 ± 2.8	3.1 ± 1.8
CB	4.5 ± 2.1	6.8 ± 3.6	3.0 ± 1.4
CA	6.5 ± 1.6	9.6 ± 2.7	4.2 ± 0.9
All phenotypes	5.1	7.8	3.2
F	3.7	2.1	1.7
p	0.05	N.S.	N.S.

that the differences between CA and the other phenotypes is significant for mean bilirubin level. Tab. III shows the mean values of bilirubin variables for the five acid phosphatase phenotypes, F and probability values for analysis of variance calculated separately for males and females. Significantly higher mean bilirubin values are observed in females of CA phenotype only.

Twenty-one babies were treated by phototherapy and three by exchange transfusion. Tab. IV shows the mean value of mean serum bilirubin levels in the "treated" and "not treated" groups. The

Tab. III. Mean values of mean and maximum serum bilirubin levels during the first five days of life, and of increment of serum bilirubin level during the first 24 hours of life calculated for the five acid phosphatase phenotypes and for males and females separately in the first series of 229 infants.

	mean bilirubin		maximum bilirubin		bilirubin increase in the first 24 h	
	M	F	M	F	M	F
A	4.8	5.4	7.3	7.8	2.7	3.8
B	5.5	4.8	8.3	7.1	3.4	3.0
BA	5.2	4.9	8.1	7.8	3.3	3.1
CB	5.0	3.3	8.0	4.5	3.4	1.5
CA	5.8	7.0	8.8	10.2	3.9	4.2
All phenotypes	5.3	4.9	8.2	7.4	3.3	3.2
F	0.34	4.6	0.17	2.7	0.26	2.2
p	N.S.	0.05	N.S.	N.S.	N.S.	N.S.

frequency of CA phenotype is higher in "treated" infants than in those "not treated". Serum bilirubin levels in "not treated" infants is higher in CA phenotypes than in other ACP₁ phenotypes.

Tab. V shows the distribution of ACP₁ phenotypes in both series of infants. No significant difference is observed between males and females.

Mean values and standard deviations of birth weight and gestational age for CA and other ACP₁ phenotypes are reported in Tab. VI, its values and corresponding probability values for differences between means are also shown. Birth weight and gestational age of CA infants appear lower than those of other ACP₁ phenotypes. The differences are significant in male infants only.

4 Discussion

Our group has already shown that CA phenotype subjects with G-6-PD deficit have a higher susceptibility to favism [2]. Moreover a retrospective study carried out on a series of subjects admitted to Hospital in the first few days of life for jaun-

Tab. IV. Mean serum bilirubin levels (mg/dl) in treated (by phototherapy or exchange-transfusion) and untreated subjects of the first series of 229 infants.

ACP ₁ phenotype		Treated	Untreated
ALL	N°	24	205
	mean value	7.48	4.86
	S.D.	1.03	1.56
CA	N°	2	5
	mean value	7.55	5.90
	S.D.	0.15	1.75
Others	N°	22	200
	mean value	7.47	4.84
	S.D.	1.08	1.55

Tab. V. Distribution of erythrocyte acid phosphatase phenotypes in both series of infants

ACP ₁ phenotype	All infants	Males	Females
A	36 (8.6)	18 (8.4)	18 (8.3)
B	211 (50.5)	103 (48.1)	108 (52.9)
BA	126 (30.1)	68 (31.8)	58 (28.4)
CB	32 (7.7)	20 (9.3)	12 (5.9)
CA	13 (3.1)	5 (2.3)	8 (3.9)

Tab. VI. Mean values and standard deviations of birth weight and gestational age calculated for CA and other ACP₁ phenotypes. Both series of infants (n° 418) are included.

	All infants	Birth weight		All infants	Gestational age	
		Males	Females		Males	Females
CA	2918 ± 783	2616 ± 1145	3106 ± 442	38.8 ± 4.1	37.8 ± 6.7	39.4 ± 1.6
Other ACP ₁ phenotypes	3254 ± 564	3293 ± 533	3245 ± 499	39.6 ± 3.4	39.7 ± 1.8	39.9 ± 2.0
t	2.09	2.72	0.77	0.87	2.10	0.67
p	0.05	0.01	N.S.	N.S.	0.05	N.S.

dice, showed a proportion of CA phenotypes significantly higher than in the control population [3].

On the basis of the previous observations and of the results given in this paper the existence of a relation between CA phenotype and higher bilirubin levels in neonatal period can be considered reasonably established. In fact both a retrospective and a prospective series of data have shown similar results.

Recent evidence indicates that ACP₁ acts *in vivo* as a flavin-mono-nucleotide phosphatase. It has also been shown that ACP₁ is inhibited by folic acid and by various folates, the phenotype dependence of inhibition being in the order B < BA < A < CB < CA < C [12]. The greater risk of hemolysis associated with the presence of P^a and

P^c fits the pattern predicted by folate inhibition effect [12].

It appears suggestive that also the relation between intrauterine development and ACP₁ phenotype fits the same pattern. However, since the number of CA phenotypes is still rather small, this relation should be confirmed by further research.

It is well known that low birth weight is associated with higher bilirubin levels. Thus the relation between CA phenotype and hyperbilirubinemia could be dependent on the relation between this genetic factor and birth weight. However, the striking differences observed between sexes seem to suggest that the relation between bilirubin levels and acid phosphatase phenotype is not dependent on that between ACP₁ and gestational age and/or birth weight.

Summary

The investigations on the identification of specific genetic factors influencing intrauterine development have till now mainly concerned monofactorial diseases, chromosomal aberrations and fetomaternal incompatibility. In many pathological situations a polygenic inheritance is presumed. In these conditions environmental factors are of great importance. The relevant biological characteristic is presumed to be normally distributed with a threshold value beyond which there is a definite risk of disease. The identification of specific genetic factors which influence multifactorial diseases is of both theoretical and practical importance, especially in disease prevention. Research in this area should be directed towards the identification of those factors which determine „normal variability“. Genetic polymorphisms are therefore the most important candidates for this type of analysis.

For several years our research group has studied erythrocyte acid phosphatase polymorphism (ACP₁), especially in relation to hemolytic conditions. In this paper the relation between ACP₁ polymorphism and some quantitative neonatal variables, which are probably multifactorial, was studied. The neonatal variables considered were serum

bilirubin levels in the first few days of life, birth weight and gestational age.

Two consecutive series of newborn infants (229 and 189 subjects respectively) were studied in the Neonatal Section of the Dept. of Child Health of Rome University.

Tab. II shows the mean values and standard deviations of mean and maximum bilirubin level (in the first 5 days of life in the series of 229 newborn babies) and of its increment during the first 24 hours of life for the five acid phosphatase phenotypes. The highest mean values of the three bilirubin parameters are observed in subjects showing CA phenotype.

Tab. VI shows the mean values and standard deviations of birth weight and gestational age calculated for CA and other ACP₁ phenotypes in both series (n° 418) of infants. Birth weight and gestational age of CA infants appear lower than that of other ACP₁ phenotypes.

Our group had already shown that CA phenotype subjects with G-6-PD deficit have a higher susceptibility to favism. Moreover a retrospective study carried out on a series of infants admitted to Hospital during the first few days of life for jaundice, had also shown a proportion of

CA phenotype significantly higher than in the control population.

On the basis of the previous observations and of the results given in this paper the existence of a relation between CA phenotype and higher bilirubin levels in the neonatal period can be considered reasonably established.

Keywords: Disease prevention, genetic polymorphism, intrauterine development, serum bilirubin level.

Zusammenfassung

Die genetische Komponente quantitativer Merkmale in der perinatalen Phase: Eine Analyse der Beziehung zwischen dem Phänotyp der sauren Erythrozytenphosphatase und dem Geburtsgewicht, der Gestationsdauer und den Serumbilirubinspiegeln in den ersten Lebenstagen.

Bisher bezogen sich Untersuchungen, die die Beeinflussung der intrauterinen Entwicklung durch genetische Faktoren nachweisen sollten, hauptsächlich auf monofaktorielle Krankheiten, chromosomale Aberrationen und feto-maternale Unverträglichkeiten. Für viele Krankheitsbilder ist aber ein polygener Erbgang zu postulieren. Unter diesen Bedingungen sind dann auch Umweltfaktoren von großer Bedeutung. Man kann annehmen, daß polyfaktorielle Merkmale eine Normalverteilung aufweisen und das mit dem Unterschreiten eines bestimmten Schwellenwerts ein Krankheitsbild mit einer definierten Wahrscheinlichkeit auftritt. Die Identifizierung dieser spezifischen genetischen Faktoren, die bei einer multifaktoriell bedingten Krankheit mitwirken, ist sowohl von theoretischer wie auch von praktischer Bedeutung, insbesondere unter dem Aspekt der Prävention von Krankheiten. Die Forschung auf diesem Gebiet sollte mit der Zielsetzung arbeiten, eben jene Faktoren zu identifizieren, die die „normale Variabilität“ determinieren. Genetische Polymorphismen haben in diesem Zusammenhang einen besonders wichtigen Stellenwert.

Unsere Forschungsgruppe hat einige Jahre den Polymorphismus der sauren Phosphatase aus Erythrozyten (=ACP₁) untersucht, wobei der Einfluß des Phosphatasetyps auf die hämolytischen Eigenschaften besonders interessiert. In der vorliegenden Arbeit war die Beziehung zwischen dem Phosphatase-Polymorphismus und einigen quantitativen Merkmalen in der neonatalen Phase, deren Ausprägung multifaktoriell bedingt ist, unser Untersuchungsgegenstand. An quantitativen Merkmalen behandelten wir den Serumbilirubinspiegel in den ersten Lebenstagen, das Geburtsgewicht und das Schwangerschaftsalter zum Zeitpunkt der Geburt.

Zwei Kollektive mit 229 bzw. 189 Neugeborenen wurden in der Abteilung Neonatologie der Universitätskinderklinik in Rom untersucht.

Schlüsselwörter: Genetischer Polymorphismus, intrauterine Entwicklung, Krankheitsprävention, Serumbilirubinspiegel.

Résumé

La composante génétique des variables pérenatologiques quantitatives. Une analyse des relations entre le phénotype de la phosphatase acide érythrocytaire et le poids de naissance, la durée de la grossesse et les taux de bilirubine sérique au cours des premiers jours de la vie.

In fact both a retrospective and a prospective series of data have shown similar results. Since the number of CA phenotypes is still rather small, the relation between acid phosphatase phenotype and birth weight and gestational age must be confirmed by further research.

Tab. II zeigt Mittelwert und Standardabweichung der mittleren bzw. maximalen Bilirubinspiegel, die während der ersten 5 Lebenstage bei 229 Neugeborenen bestimmt wurden, sowie den Bilirubinanstieg innerhalb der ersten 24 Stunden post partum. Die Werte sind jeweils dem Phosphatasephänotyp zugeordnet, wobei 5 Phänotypen zu unterscheiden sind. Es fällt auf, daß die höchsten Mittelwerte bei Neugeborenen mit dem Phosphatasetyp CA auftreten.

Tab. VI gibt den Zusammenhang zwischen Geburtsgewicht bzw. Gestationsalter und dem jeweiligen Phosphatase-Phänotyp wieder. In dieser Aufstellung wurden beide Kollektive, also 418 Kinder berücksichtigt. Es scheint, daß Neugeborene mit dem Phosphatasetyp CA ein geringeres Geburtsgewicht und eine kürzere Schwangerschaftsdauer aufweisen als Träger eines anderen Phosphatase-Phänotyps.

Unsere Arbeitsgruppe hat bereits nachweisen können, daß bei Kindern mit Phosphatasetyp CA und Glucose-6-Phosphat-Dehydrogenase-Mangel die Empfindlichkeit gegenüber dem Krankheitssyndrom Favismus erhöht ist. Darüberhinaus konnten wir aus einer retrospektiven Studie ablesen, daß unter Kindern, die in den ersten Lebenstagen wegen Gelbsucht im Hospital waren, der Anteil an CA-Trägern größer als in einer Kontrollpopulation war.

Auf der Basis der vorangegangenen Beobachtungen und der Ergebnisse der vorliegenden Untersuchung läßt sich eine gesicherte Beziehung zwischen dem Phosphatase-Phänotyp CA und höheren Bilirubinwerten in der neonatalen Phase aufstellen. Tatsächlich haben die retrospektive wie die prospektive Untersuchung zu den gleichen Ergebnissen geführt. Die Beziehung zwischen CA-Phänotyp und Geburtsgewicht bzw. Gestationsalter läßt sich bislang noch nicht eindeutig absichern, da die Fallzahl zu klein ist. Die oben angedeutete Tendenz muß durch weitere Untersuchungen bestätigt werden.

hérédité polygénétique dans plusieurs états pathologiques. Sous cet aspect, des facteurs d'environnement prennent une grande importance. L'on peut admettre que la caractéristique biologique principale se distribue normalement et qu'avec le franchissement d'un certain seuil un état pathologique survient avec une probabilité définie. L'identification de facteurs génétiques spécifiques conditionnant des maladies multifactorielles est à la fois d'importance théorique et pratique, en particulier dans la prévention de l'affection. La recherche dans ce domaine devrait donc être dirigée vers l'identification de ces facteurs qui déterminent «la variabilité normale». Les polymorphismes génétiques sont ici les candidats les plus importants pour ce type d'analyse.

Pendant plusieurs années notre groupe de recherches a étudié le polymorphisme de la phosphatase acide érythrocytaire (ACP₁), particulièrement en relation avec des conditions d'hémolyse. L'objet de ce travail a été l'étude de la relation entre le polymorphisme ACP₁ et quelques variables néonatalogiques quantitatives, probablement multifactorielles. Les variables néonatalogiques prises en considération étaient les taux de bilirubine sérique au cours des premiers jours de vie, le poids de naissance et la durée de grossesse.

Deux séries consécutives de nouveaux-nés (respectivement de 229 et 189 enfants) ont été étudiées dans la Section de Néonatalogie du Département de Pédiatrie de l'Université de Rome.

La fig. 2 montre les valeurs moyennes et les déviations standard des taux moyen et maximum de bilirubine (au

cours des 5 premiers jours de vie dans la série de 229 nouveaux-nés) ainsi que leur augmentation pendant les 24 premières heures de vie pour les 5 phénotypes de phosphatase acide. Les moyennes les plus élevées des trois paramètres de bilirubine ont été relevées chez les sujets présentant le phénotype CA.

Le tableau 6 montre les valeurs moyennes et les déviations standard des poids de naissance et des âges gestationnels calculés pour le CA et autre ACP₁-phénotype dans les deux séries d'enfants (n=418). Le poids de naissance et l'âge gestationnel des enfants CA apparut inférieur à celui des autres phénotypes ACP₁.

Notre groupe a déjà montré que les sujets du phénotype CA avec un déficit de G-6-PD sont d'avantage susceptibles de favisme. D'autre part une étude rétrospective sur une série d'enfants admis au Service au cours des premiers jours de vie pour ictère a montré une proportion de phénotype CA nettement plus élevée que dans la population de contrôle.

A la suite des observations précédentes et des résultats présentés dans cet article on peut raisonnablement admettre la relation entre le phénotype CA et l'hyperbilirubinémie néonatale. En effet, les deux séries de données, rétrospective et prospective, ont abouti à des résultats similaires. Cependant, vu le nombre réduit de phénotypes CA il semble nécessaire de confirmer par des recherches ultérieures la relation entre le phénotype de la phosphatase acide et le poids de naissance ainsi que la durée de grossesse.

Mots-clés: Bilirubinémie sérique, développement intrautérin, polymorphisme génétique, prévention des maladies.

Bibliography

- [1] BOTTINI, E.: Genetic polymorphisms and their role in normal variability and diseases. *It. J. Ped.* 3 (1977) 5
- [2] BOTTINI, E., P. LUCARELLI, R. AGOSTINO, R. PALMARINO, L. BUSINCO, G. ANTOGNONI: Favism: Association with erythrocyte acid phosphatase phenotype. *Science* 171 (1971) 409
- [3] BOTTINI, E., P. LUCARELLI, V. BASTIANON, F. GLORIA: Erythrocyte acid phosphatase polymorphism and haemolysis. *J. Med. Genetics* 9 (1972) 434
- [4] BOTTINI, E., P. LUCARELLI, L. TUCCIARONE, E. CARAPPELLA, R. PALMARINO: In vitro effect of acetylphenylhydrazine on acid phosphatases of fetal red blood cells. *Biol. Neonate* 15 (1970) 57
- [5] BOTTINI, E., G. MODIANO, C. SANTOLAMAZZA, G. FILIPPI, L. BUSINCO: Studies of the in vitro effects of oxidized glutathione and acetylphenylhydrazine on acid phosphatases of human red blood cells. An experimental model for the investigation of hemolytic drug action at the molecular level. *Clin. Chim. Acta* 31 (1971) 243
- [6] BOTTINI, E., R. SCACCHI, F. GLORIA-BOTTINI, J. MORTERA, R. PALMARINO, E. CARAPPELLA DE LUCA, A. S. LAPI, C. NODARI: Neonatal jaundice and erythrocyte-acid-phosphatase phenotype. *Lancet* 1 (1976) 918
- [7] CARTER, C. O.: Genetics of common disorders. *Brit. Med. Bull.* 25 (1969) 52
- [8] HOPKINSON, D. A., N. SPENCER, H. HARRIS: Red cell acid phosphatase variants: A new human polymorphism. *Nature* 199 (1963) 969
- [9] HOPKINSON, D. A., N. SPENCER, H. HARRIS: Genetical studies on human red cell acid phosphatase. *Amer. J. Hum. Genet.* 16 (1964) 141
- [10] MODIANO, G., G. FILIPPI, F. BRUNELLI, W. FRATTAROLI, M. SINISCALCO, R. PALMARINO, C. SANTOLAMAZZA: Studies on red cell acid phosphatases in Sardinia and Rome. Absence of correlation with past malarial morbidity. *Acta Genetica et Statistica Medica* 17 (1967) 17
- [11] SPENNATI, G. F., M. ORZALES, E. BOTTINI: Stability of acid phosphatase of fetal red blood cells during incubation with acetylphenylhydrazine. *Acta Paediat. Scand.* 60 (1971) 192
- [12] SENSABAUGH, G. F. and GOLDEN, V. L.: Phenotype dependence in the inhibition of red cell acid phosphatase (ACP) by folates. *Amer. J. Hum. Genet.* 30 (1978) 553

Received February, 2, 1978. Revised April 30, 1979.
Accepted June 6, 1979.

Prof. Egidio Bottini
Laboratorio di Genetica
Via Filippo Camerini 2
Università degli Studi di Camerino
I-62032-Camerino (MC) ITALY